

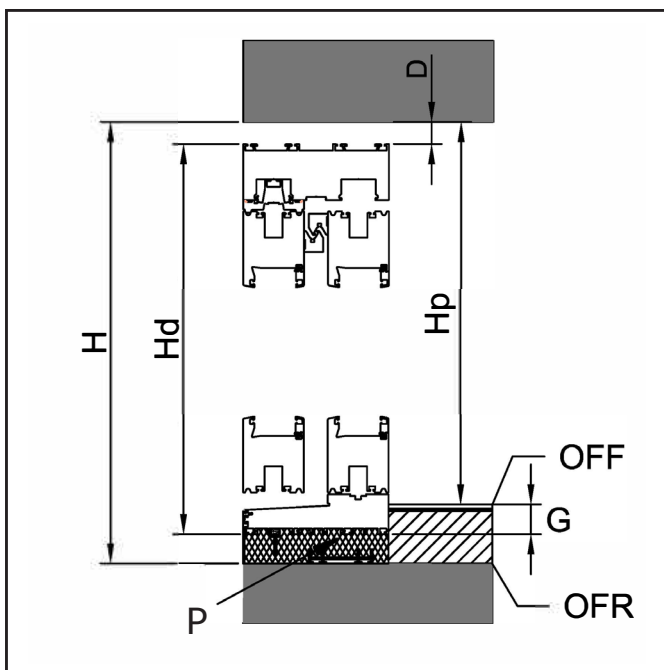
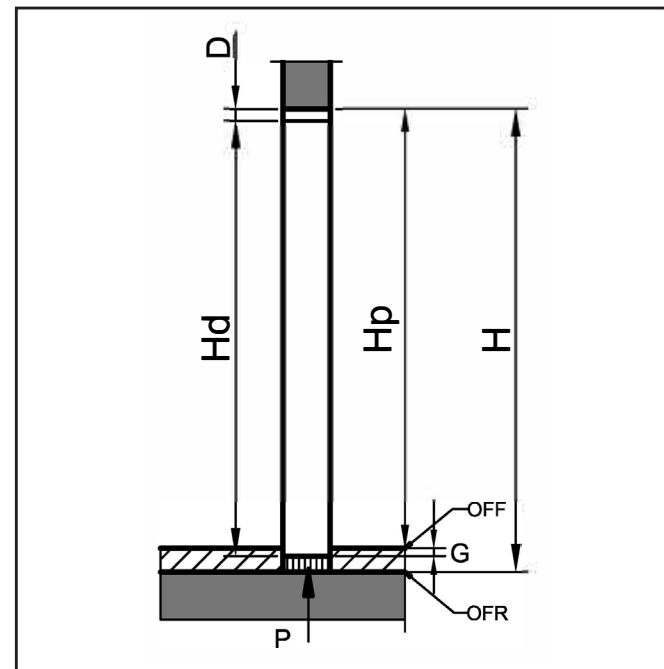
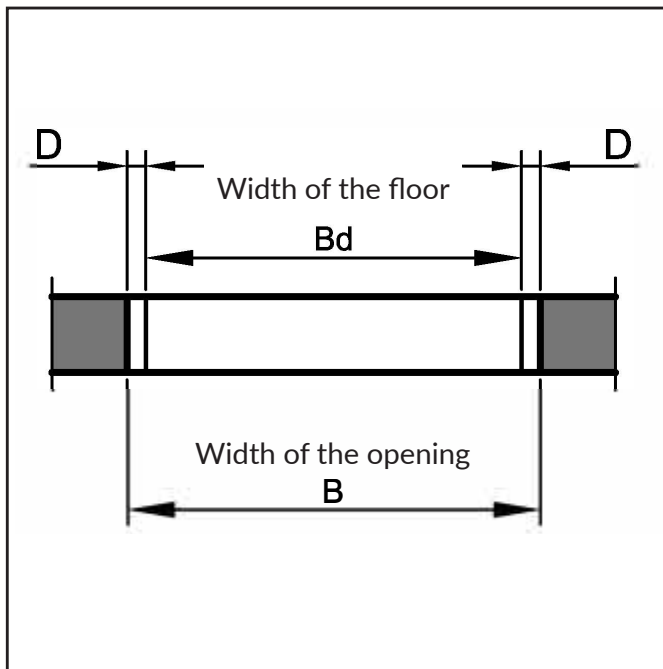
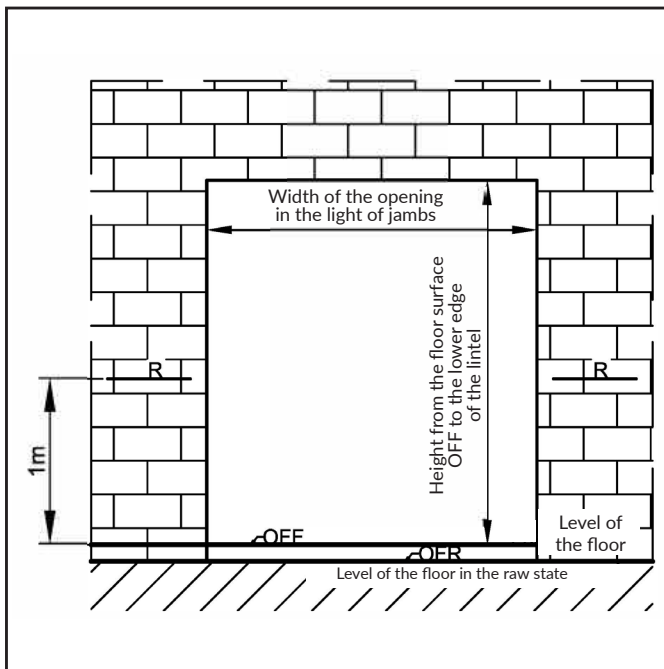


# ASSEMBLY INSTRUCTIONS

**T-SLIDE**

THE BASIS FOR THE T-SLIDE ASSEMBLY INSTRUCTIONS IS TO MAINTAIN THE LEVEL OF THE GROUND ON WHICH THE CONSTRUCTION WILL BE PLACED. DETAILS IN THE ASSEMBLY INSTRUCTIONS.

# 1. MEASUREMENT | DEFINITION OF THE CORRECT PRODUCTIVE MEASUREMENT OF LIFT-SLIDE DOORS HS (T-SLIDE)



- OFR** - surface of the floor in the raw state (so-called thin floor)
- OFF** - surface of the floor – ready solution (panel, ceramic tile)
- H** - height of the opening
- Hd** - height of the door
- Hp** - height of the opening to the floor
- B** - width of the opening

- Bd** - width of the door
- R** - marker at a height of 1 m above the floor level (reper)
- G** - depth of setting the threshold
- D** - dilatation
- P** - subliminal profile (system widenings, styrodur “subliminal block”)

1. Determine with the investor the height of the floor from inside the room “for ready - OFF” (including all layers with the final base surface, for example: plank, panel, ceramic tile).
2. Determine the threshold height and the depth of its embedding, assuming that the threshold should allow free passage. The threshold should be overhanging above the floor level no more than 20 mm, whereas max embedding of the threshold may not exceed its height.
3. In order to determine the height of HS, remove the upper mounting clearance from the opening height and add the depth of the embedded threshold.  
 $Hd = H - D + G$   
 In case of application the subliminal profile - Klinaryt type of warm XPS material under the threshold, the additional mounting clearance for foam at the bottom is not taken into account. Condition: subliminal profile should be attached with adhesive for mounting to the levelled surface of the floor.
4. Knowing the height of the opening, the height of the door as well as the mounting clearance, a subliminal profile of appropriate height should be selected.

$$P = H - (Hd + D)$$

### Determination of width:

From the width of the opening, remove the mounting clearance (dilatation) for the foam from 12-25 mm per side.

$$Bd=B-(2\cdot D)$$

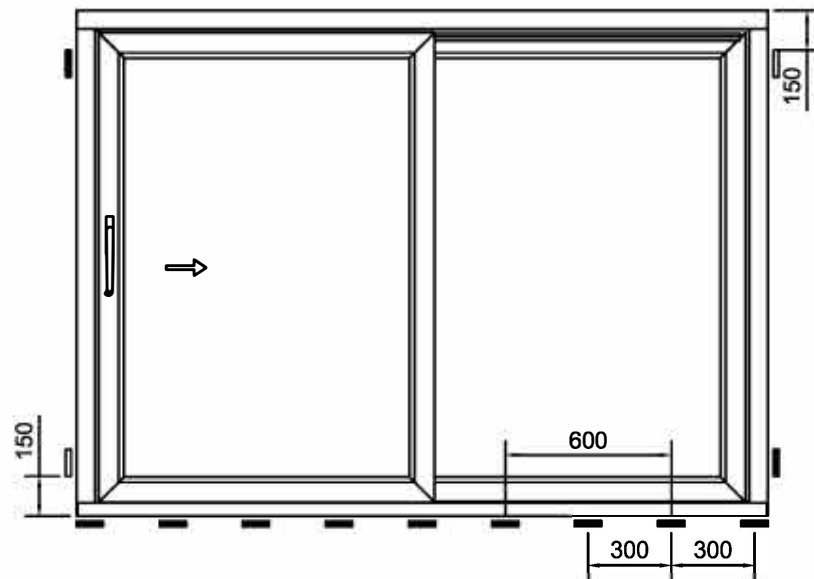
### Determination of height:



In order to properly support and insulate the threshold, system-based subliminal profiles from XPS-type „subliminal block” material or extension should be used. The lack of this type of solution may result in condensation of steam and consequently to the freezing threshold.

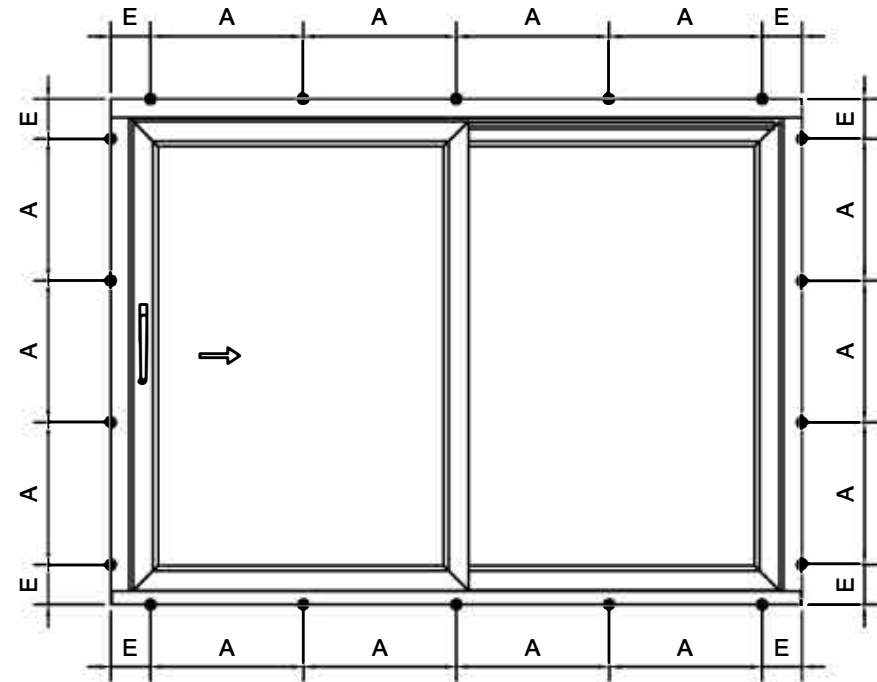
**THE BASIS FOR THE T-SLIDE ASSEMBLY INSTRUCTIONS IS TO MAINTAIN THE LEVEL OF THE GROUND ON WHICH THE CONSTRUCTION WILL BE PLACED.**


**Note: when providing the HS dimension for production, please specify the size of the door with the threshold (Height of the subliminal profiles is not taken into account)**

## 2. INSTALLATION | RULES FOR PLACING SUPPORT AND SPACER BLOCKS AS WELL AS THE CORRECT SPACING OF FIXINGS WITH THE WALL



-  - spacer block
-  - support block



-  - fixing point
- A - distance between the fixing points: 500/700 mm
- E - distance from inner corner 150 mm

### Placement of blocks:

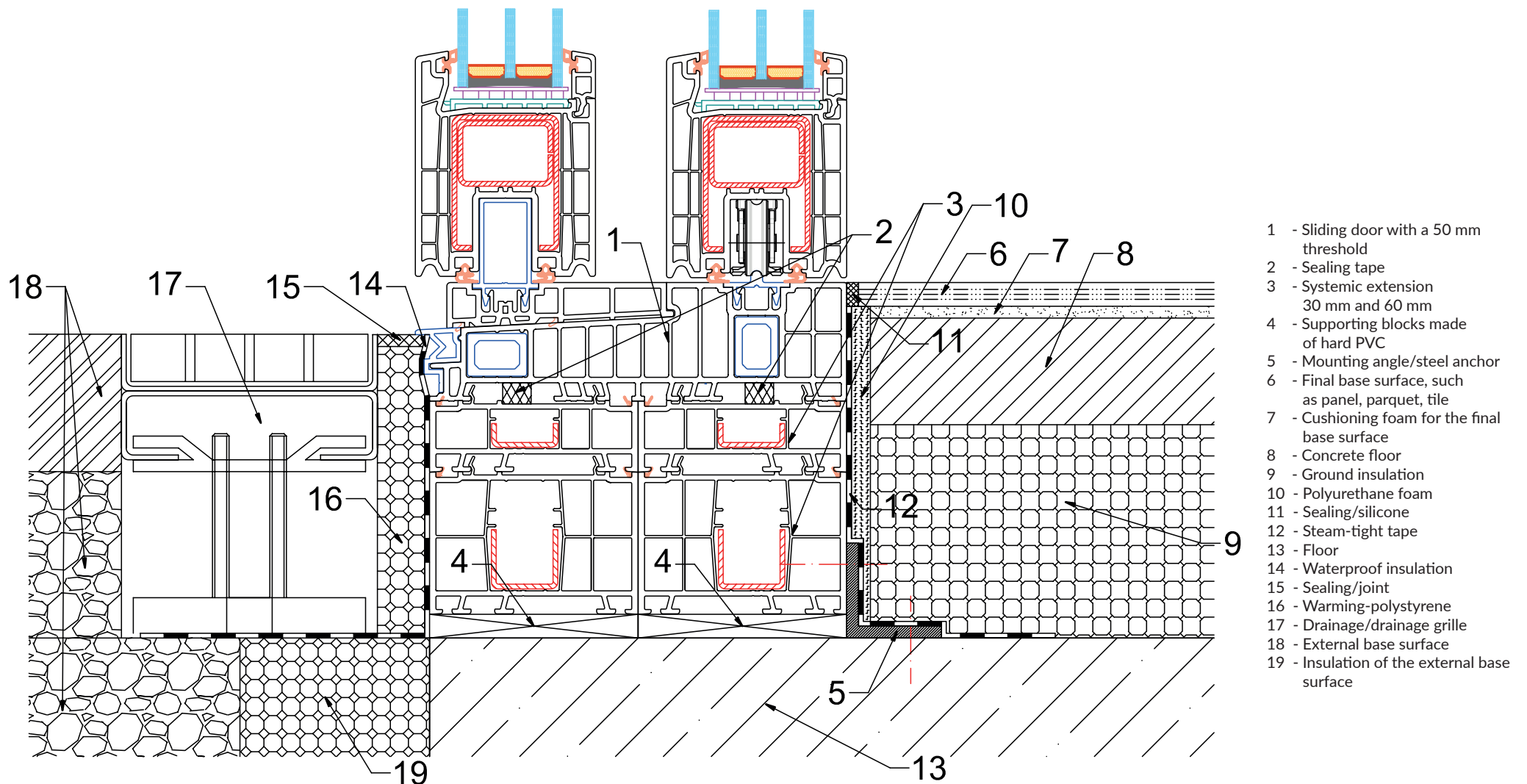
Support blocks should be placed no more than 300 mm apart. Spacers (used to determine the position of the window in the opening) after the jamb fixing should be removed. However, the support blocks should not be removed.

### Spacing of fixing elements:

Distance of the first fixing element counted from the corner of the frame should not be more than 150 mm. Spacing of the fixing points should not be more than 500 mm – 700 mm.

## AN EXAMPLE OF THE CORRECT EMBEDDING OF THE HIGH THRESHOLD ON SYSTEM WIDENINGS FOR SO-CALLED "ZERO" WITH THE FLOOR

The picture presents one of the threshold option in our offer. NOTE: it is ALWAYS necessary to measure the threshold height of the T-SLIDE construction and adjust dimension of embedding to the threshold height.



### Attention

High threshold 50 mm with a thermal insert. The threshold may be embedded in the internal base surface max 50 mm. From the outside, take into account the outflow of rainwater, preferably to the sewage grate. It is necessary to ensure stable support of the threshold from hard styrodur, wooden foundations or extensions depending on the possibilities. The threshold cannot be fastened directly, but only indirectly – for anchors or angle iron.



For more assembly instructions visit our website:  
**[www.budvarcentrum.eu](http://www.budvarcentrum.eu)**